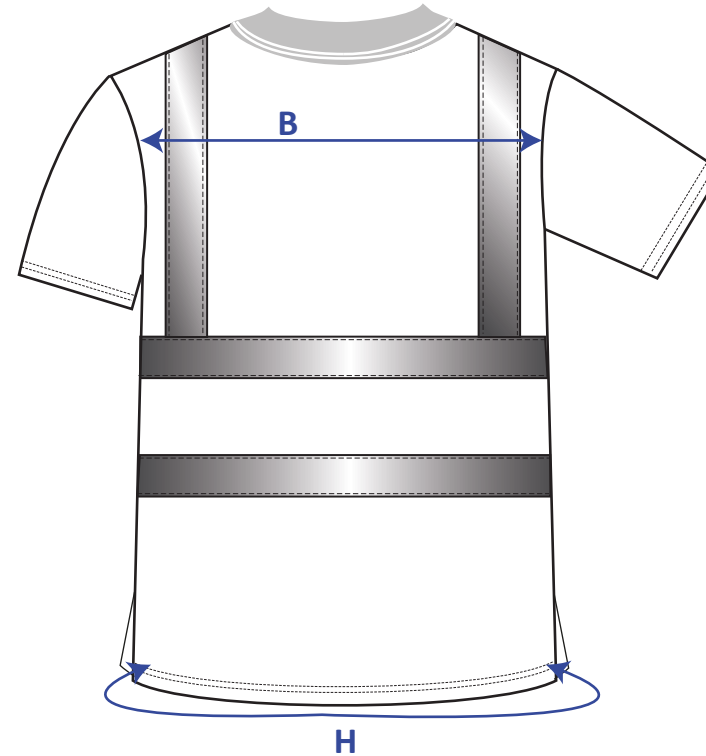
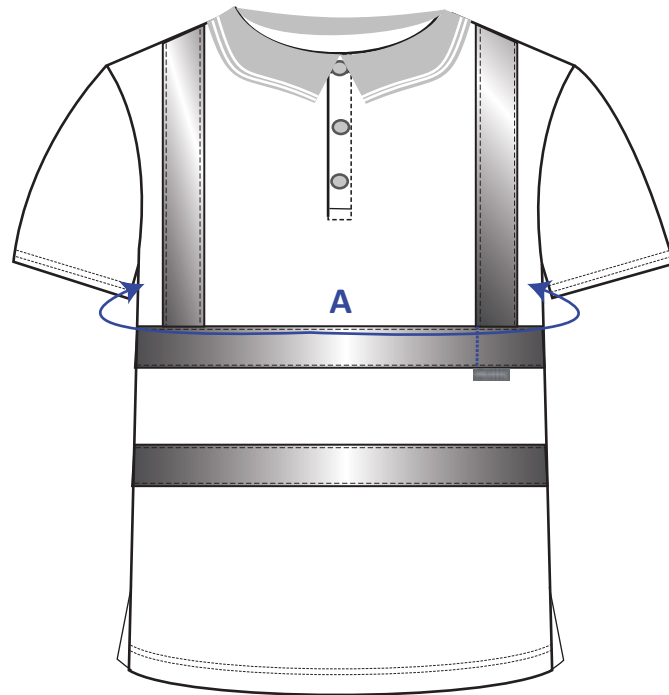


STYLE NO: RT22

DESCRIPTION: Hi-Vis Short Sleeved Polo Shirt

FABRIC: 100% Polyester Bird Eye Knit, 175g/m2

COLOUR: Orange



Measurements are for fully relaxed fabric, in cm.		XS	S	M	L	XL	XXL	XXXL	4XL	5XL	6XL	7XL	Tol (+)
		80-88	92-96	100-104	108-112	116-124	128-132	136-140	144-148	152-160	164-172	176-184	
A	Chest	98	106	114	122	134	142	150	158	170	182	194	1
B	Across Back (measured 12cm below neck)	46	48	50	52	55	57	59	61	64	67	70	0.5
H	Hem circumference	98	106	114	122	134	142	150	158	170	182	194	0.5